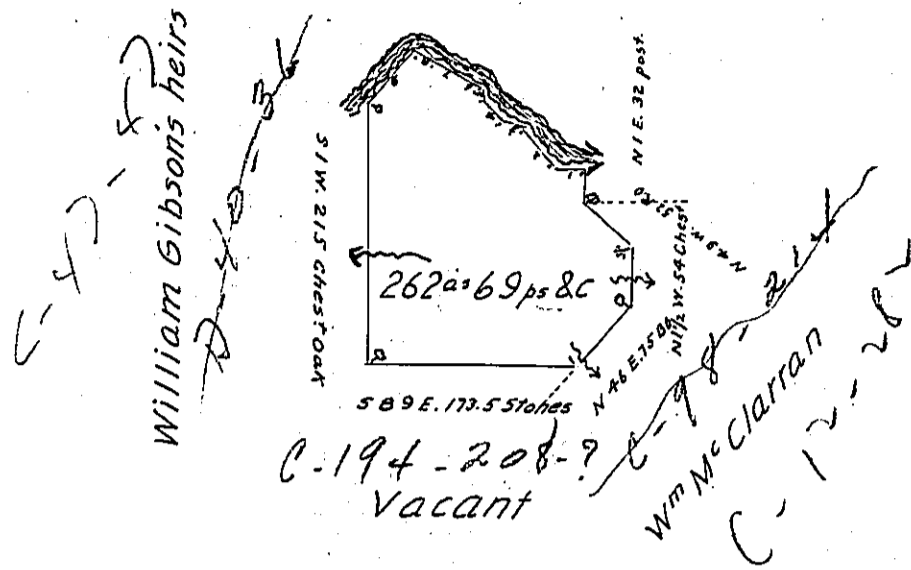


Courses and distances up

Sandy creek from post

- Nº 1. 5.83 W. 23
- " 2 N. 40 W 48
- 3 N 73 W 16
- 4 N 47 W 24
- 5 North 8
- 6 N. 65 W. 36
- 7 N 51 W 27
- 8 N 68 W 8
- 9 S 35 W 63 to  
Hemlock bush



Draft of a tract of land situate in Sandy creek township, Venango county, West of the Allegheny river, and South of and adjoining Sandy creek— Surveyed 25<sup>th</sup> July 1838 for John McCalmont on improvement and actual Settlement.

The above is a copy of the original entry of Richd Irwin Esq former Deputy Surveyor of Venango County— Witness my hand this 10<sup>th</sup> Nov<sup>r</sup> 1859

Charles H Heydrick D.S.

To

John Rowe Esq

Sur<sup>r</sup> Genl

The township line has been changed since the above survey was made and the land is now in French creek township

C. Heydrick

IN TESTIMONY that the above is a copy of the original remaining on file in the Department of Internal Affairs of Pennsylvania, made conformably to an Act of Assembly approved the 16th day of February, 1833, I have hereunto set my Hand and caused the Seal of said Department to be affixed at Harrisburg, this twentieth day of February 1904.

*Lucas P. Pearson*  
Secretary of Internal Affairs.